
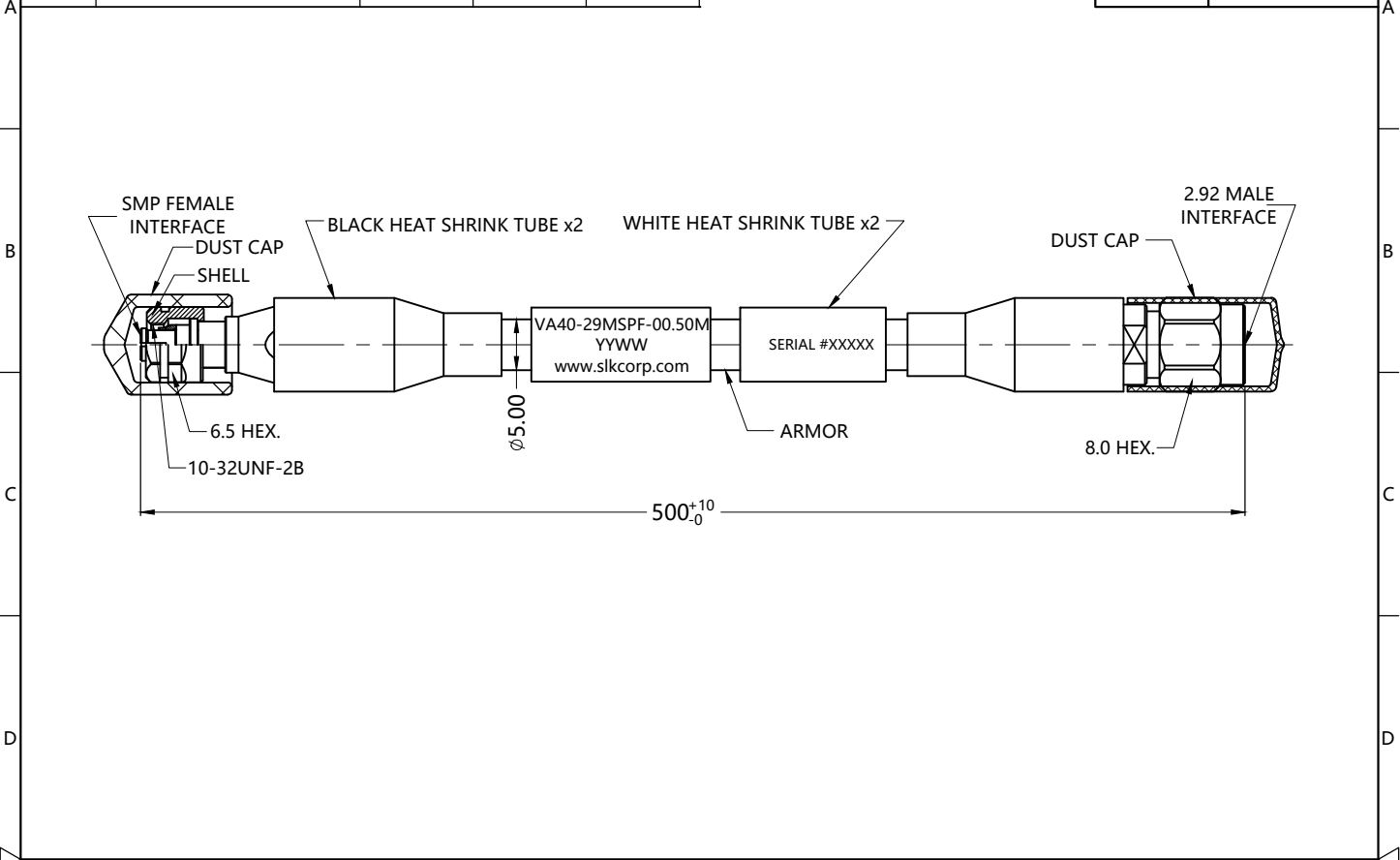
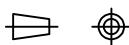



1	2	3	4	5	6
REV.	DESCRIPTION	ECN NO.	NAME	DATE	
0	FIRST EDITION	N/A	LTZ	2019-10-30	 ALL PARTS MUST MEET TO RoHS REQUIREMENTS
1	CHANGE SCHEME	N/A	SYH	2020-03-23	



MATERIALS AND PLATING UNIT: MICRO-INCHES				ELECTRICAL CHARACTERISTICS				
PART TYPE	PART NAME	MATERIALS	PLATING					
SMP S/T FEMALE	BODY/SHELL	STAINLESS STEEL 316F	PASSIVATION	IMPEDANCE		50 Ω		
	INSULATOR	PTFE /ULTEM1000 PEI	N/A	VOLTAGE RATING		175 V(rms)		
	CONTACT PIN	BeCu C17300	PL.GOLD/COPPER	FREQUENCY RANGE		DC ~ 40 GHz		
	OUT CONTACT	BeCu C17300	PL.GOLD/NICKEL/COPPER	DIELECTRIC WITHSTANDING VOLTAGE		>500 V		
2.92 S/T MALE	BODY/SHELL	STAINLESS STEEL 316F	PASSIVATION	CONTACT RESISTANCE		CENTER CONTACT	N/A	
	INSULATOR	ULTEM1000 PEI	N/A			OUTER CONTACT	N/A	
	CONTACT PIN	BeCu C17300	PL.GOLD/COPPER	INSULATION RESISTANCE		>1000 MΩ		
CABLE	VA40 TEST CABLE			DC ~ 18 GHz	INSERTION LOSS	<2.35 dB	<1.30	
OTHER	N/A			DC ~ 26.5 GHz		<2.90 dB	VSWR	<1.40
				DC ~ 40 GHz		<4.80 dB		<1.50
MECHANICAL CHARACTERISTICS				MECHANICAL PHASE STABILITY		<±5°		
CABLE RETENTION FORCE			>15 lbs	MECHANICAL AMPLITUDE STABILITY		<±0.15 dB		
CABLE STATIC BENDING RADIUS			30mm	ENVIRONMENTAL PARAMETER				
RECOMMENDED COUPLING TORQUE			5.3~8.9 in-lbs	TEMPERATURE RANGE		-40 °C~+85 °C		
DURABILITY			>500cycles	PROTECTION GRADE		N/A		

CUSTOMER OUTLINE DRAWING

<b>CUSTOMER OUTLINE DRAWING</b>			THIRD ANGLE PROJECTION 		
UNLESS OTHERWISE SPECIFIED: 1) EDGES : N/A ; 2) REMOVE ALL BURRS : N/A ; 3) SURFACE ROUGHNESS : N/A ; 4) UNITS : mm ; 5) DIMENSIONS TOLERANCES DECIMALS : .x ±5, .xx ±2, .xxx±1; ANGLES : ±10°.		APPROVED :	CUSTOMER P/N :		
		CHECKED :	SCALE : 3 : 2		DRAWING NO. :
		DRAWING :	DATE : 2020-03-23		VA40-29MSPF-00.50M
			PAGE : 1/1		COMPANY WEBSITE : www.slkcorp.com